



**AAURLO POWER**  
(AN ISO: 9001-2015 Certificate Company)

# TRANSFORMER WHEEL / ROLLERS



[www.aurlopower.in](http://www.aurlopower.in)







**AAURLO POWER**  
(AN ISO: 9001-2015 Certificate Company)

POWERING TOMORROW :

introducing

# **AAURLO POWER**

Rollers for Transformer

[www.aurlopower.in](http://www.aurlopower.in)



**AAURLO POWER**  
(AN ISO: 9001-2015 Certificate Company)

## **AAURLO POWER**

- At Aaurlo Power, an ISO 9001:2015 company, we specialize in Transformer Roller, Fabrication, Pipe Fabrication, Sheet Metal Fabrication and custom fabricated projects.
- It is always our aim is to become a trusted partner in Roller Assembly excellence for all the customers we work for.
- We are doing Roller Assembly as per Customer Dimensions and Wehane your On Design of Roller Ready in stock
- Our approach to Roller Assembly is a customer centric approach. This means understanding the clients requirements and then exceeding it by emphasis on precision, quality control and on time delivery.
- We also try to find out and implement the integration of advanced technologies and best practices for optimal results.
- Our team, our biggest asset, consists of skilled Transfermer Roller, welders and technicians. We keep on training them to keep them updated with latest techniques and standards.





**AAURLO POWER**  
(AN ISO: 9001-2015 Certificate Company)

# MEET THE VISIONARIES The **FACES** Behind the **SHOW**



FOUNDER- RAJESH VISHWAKARMA



FOUNDER- RAJESH VISHWAKARMA

A luminary in the Roller Assembly, with an illustrious career spanning over 34 years. His expertise has not only shined within the industry but has also left a lasting imprint. FOUNDER- RAJESH VISHWAKARMA credentials stand as a testament to his mastery.

RAJESH VISHWAKARMA has shared his wisdom by actively engaging in educating fellow professionals on various aspects of weld engineering. In essence, Mr. Rajesh Vishwakarma graces us as our mentor and advisor.

His counsel, be it technical or strategic, paves the path for us to deliver services that embody the pinnacle of Quality and Excellence

[www.aurlopower.in](http://www.aurlopower.in)

# WHY CHOOSE US –



**AAURLO POWER**  
(AN ISO: 9001-2015 Certificate Company)

## Elevating Transformer Roller Assembly Solutions

- LOCATION – our plant is located in a Savarda Chakan MIDC Pune – 410501
- EXPERIENCE – Highly experienced and qualified promoters
- SPARE CAPACITY – Presently we have a spare capacity to manufacture 200 to 300 capacity per month
- WORKING AREA – 18,000 square feet constructed area can be used immediately as shown below.

Expansion scope is there between both the buildings.



Building No. PAP 5-16  
(11,000 sq. feet)



Company Build up Area





## Certificate of Registration

This is to certify that

### AAURLO POWER

PAP S - 16, PHASE - 2, SAVARDARI, MIDC CHAKAN, PUNE - 410501,  
MAHARASHTRA, INDIA

Has been assessed and certified by MQA Certification Services

As meeting the requirements of:

**ISO 9001:2015**

### Quality Management System

For the Following Scope of Activities:

**MANUFACTURER OF GRINDING MACHINES, BELT GRINDER, BAND SAW  
MACHINES, ROLLER, WHEELS, PIPE GRINDING MACHINE, & OTHER  
RELATED INDUSTRIAL EQUIPMENT**

:: Certificate No :: QMS/22M074

*Date of initial registration:* 24 January 2022

*First Surveillance Audit on or before:* 23 January 2023

*Second Surveillance Audit on or before:* 23 January 2024

*Re-certification Due:* 23 January 2025

This Certificate is property of MQA and remains valid  
Subject to satisfactory surveillance audits.

Authorized Signatory  
MQA CERTIFICATION SERVICES  
H-03, New Ram Nagar Colony, Mathura  
Road, Hathras-204101, U.P., India



To check validity of the certificate please visit at [www.mqacertification.com](http://www.mqacertification.com)

This certification of registration is issued by MQA Certification Services accredited with UK SAF LIMITED  
Accreditation Board For Certification Bodies ([www.uksaf.org.uk](http://www.uksaf.org.uk)). This certificate remains the property of  
MQA Certification Services and must be returned upon request.

# WHY CHOOSE US Elevating Transformer Tank Solutions

## ROBUST QMS

ISO 9001- 2015 Certified Organization

- ISO 3834 -2 Welding Quality Certified Organization
- NDT / NDE for Inspection as per ASNT SNT TC-1A
- WPS as per EN ISO 15609-1 / PQR as per EN ISO 15614-1
- Welder Qualification as per EN ISO 9606 -1
- Robotic Operator Qualification as per EN ISO 14732
- Weld Map / Skill Matrix for employees
- VMC Program Software workouts in Hooso.
- Roller Assanby Designing Software. in House.

[www.aaurlopower.in](http://www.aaurlopower.in)

# TALK FOR AAURLO POWER COMPANY PROFILE

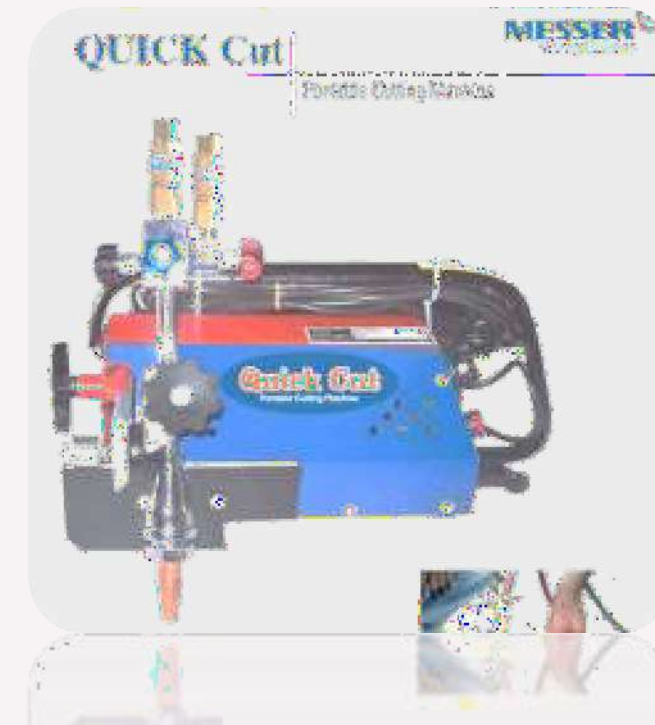
## Empowering Our Production

- 5 tonnes overhead crane & 2 tonnes & 1 tonne hoists
- GMAW / MIG / MAG Welding Machines – 2Nos
- GTAW / TIG Welding Machine – 1 No
- SMAW / MMAW Welding Machine – 1 No
- VMC Machines
- Plasma Cutting Machine – 1 No
- Welding Table (2500mm x 1300mm) – 2 Nos
- Welding Table (3000mm x 1500mm) – 1 No
- Cut Off Machine
- Pug Cutting Machine
- Matr Milling Machines
- Angle Grinders 4 inch & 7 inch & Pencil Grinders
- Radial Drilling Machine
- Broach Cutter / Magnetic Drilling Machine
- Various Tools & Tackles for Fabrication support
- Various Material Handling Equipment / Racks / Bins / Trollies
- Compressor



# STATE OF ART FACILITIES

## Empowering Our Production







**AAURLO POWER**  
(AN ISO: 9001-2015 Certificate Company)

# After Assembly



# Before Assembly







**AAURLO POWER**  
(AN ISO: 9001-2015 Certificate Company)

# STATE OF ART FACILITIES

Empowering Our Production

Robot specifications

Motion range	
J1 axis S	$\pm 160^\circ$
J2 axis L	+80--145
J3 axis U	+145°--75
J4 axis R	$\pm 190''$
J5 axis B	+50°--210''
J6 axis T	+220''

Welding Robot – 1 No



[www.aurlopower.in](http://www.aurlopower.in)

plasma arc cutting (PAC) is an industrial process widely used for cutting various away types of metals in several operating conditions.

Design/methodology/approach: It is carried out a systematic or an authoritative inquiry to discover and examine the fact, the plasma cutting process is to establish the accuracy and the quality of the cut in this current paper assessed a good away to better the cutting process.

Findings: It found that the effect of parameters on the cutting quality than on the results performed to accomplish by statistical analysis.

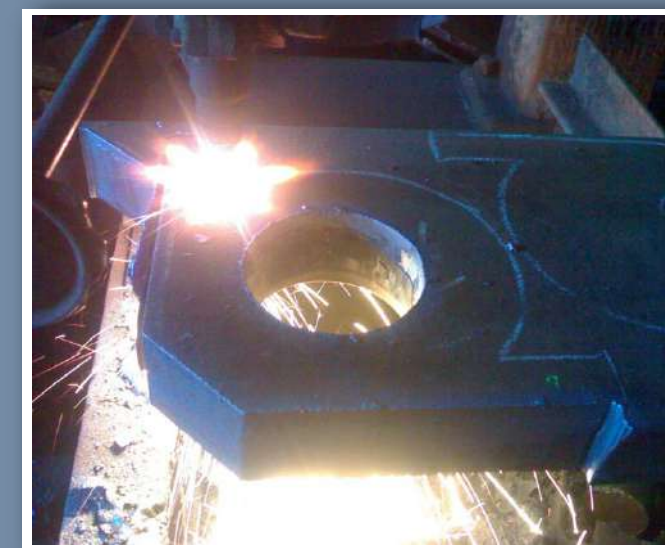
Research limitations/implications: The objective of the present work paper is to achieve cutting parameters, thus the quality of the cutting process depends upon the plasma gas pressure, scanning speed, cutting power, and cutting height.

Practical implications: The product of the plasma cutting process experimentally has been the quality of the cutting equipment that was installed to monitor kerf width quality by exam the edge roughness, kerf width, and the size of the heat-affected zone (HAZ).

Originality/value: The results reveal that were technically possessed of including all the relevant characteristics, then a quality control for the cutting and describe the consequence of the process parameters

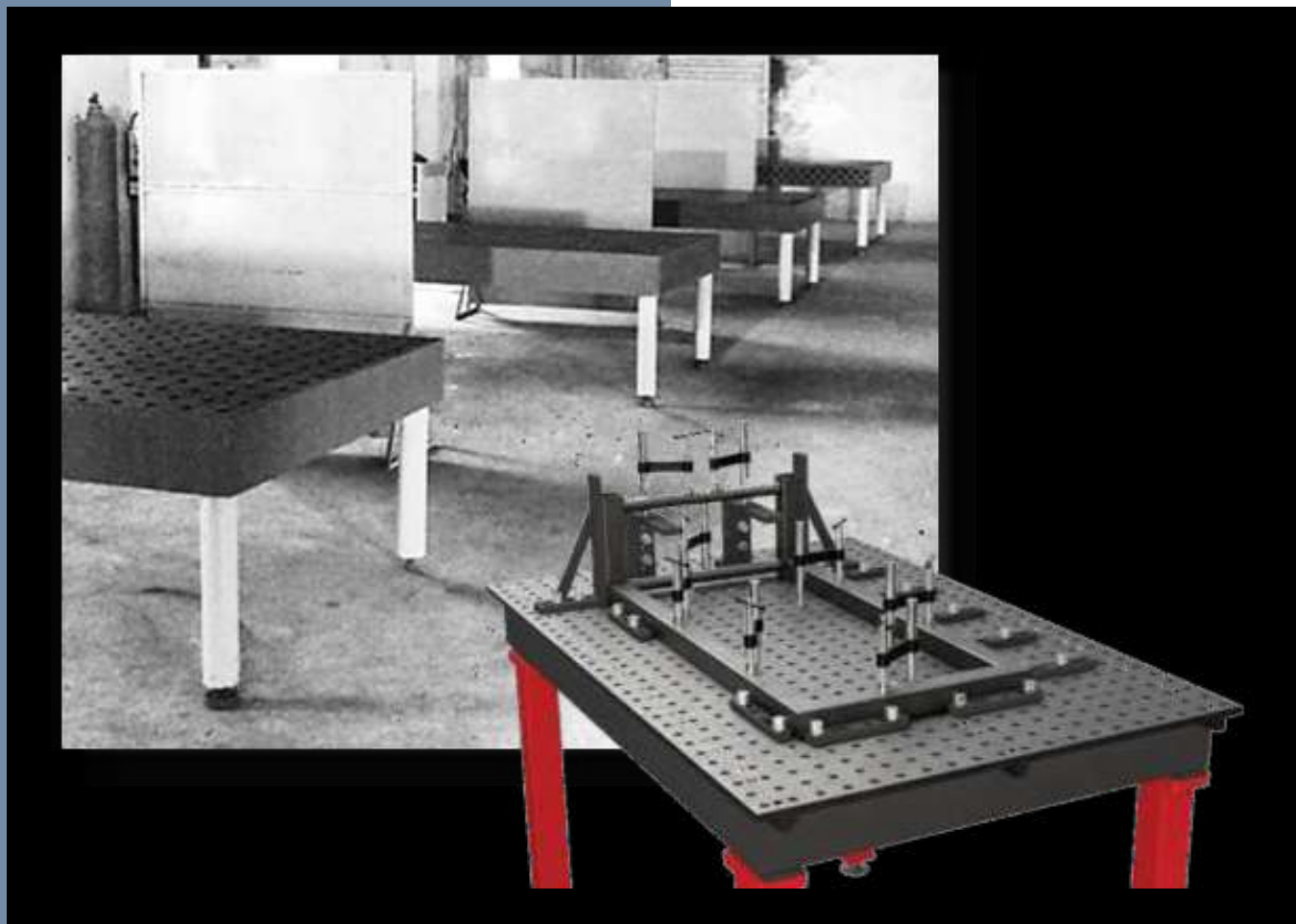


**AAURLO POWER**  
(AN ISO: 9001-2015 Certificate Company)



# STATE OF ART FACILITIES

## Empowering Our Production



- **Welding Table (2500mm x 1300mm) – 3 Nos**
- **Welding Table (3000mm x 1500mm) – 1 No**

- Welding tables provide a flat and stable surface for welding activities. This stability ensures that the workpiece remains secure during welding, reducing the risk of distortion or warping.

- The grid pattern on welding tables allows for quick setup and adjustment of fixtures and clamps. This reduces the time spent on preparation and increases productivity.

- Welding tables are essential tools that offer numerous benefits including stability, versatility, safety, and improved workflow efficiency.

It significantly enhance the quality and productivity of welding operations while promoting a safer working environment.



# STATE OF ART FACILITIES

## Empowering Our Production



### •Plasma Cutting Machine – 1 No

Plasma cutting produces a narrow heat-affected zone (HAZ) compared to other cutting methods, such as oxy-fuel cutting. This reduces the risk of material distortion or warping, especially important for precision fabrication.



Model-	AIRCUT-1021 Power Source
Input Power (KVA)	18
Cutting Thickness	Clean Cut in MS,SS-25 mm
Rough Cut in MS,SS	30 mm
Current Range (A)	30-100
No Load Voltage (DC)	340
Duty cycle	100% (40°C & 10 Min)
Torch cooling type	Air
Weight (Kg)	51



# STATE OF ART FACILITIES

## Empowering Our Production

- **Broach Cutter / Magnetic Drilling Machine**
- Broach cutters offer increased safety for operators. The magnetic base secures the drill firmly to the workpiece, minimizing the risk of slippage or accidents during drilling. Additionally, the cutter produces fewer metal chips and flying debris, enhancing workplace safety.
- Broach cutters allow for precise control over hole depth, ensuring uniformity and consistency in drilling operations. This is particularly important for applications requiring accurate hole dimensions like in transformer where many blind holes are needed to be drilled which are critical for oil leakage.

Specification	KBM 50-2
Input Supply Voltage (V)	220-240
Motor Input (W)	1200
Core Cutting Capacity (mm)	12 to 50:
Core Cutting Depth (mm)	50
Rated Speed (RPM)	450/250:
Weight (Kg)	17.5

# STATE OF ART FACILITIES

## Empowering Our Production

Various Tools & Tackles for Fabrication support





# INSIDE OUR WORKSPACE

## Office & Conference Hall

- Our office is designed to inspire & foster creativity. This space reflects our commitment to innovation & collaboration.
- One of the key features of our office is our state-of-the-art conference hall. This space serves as the heartbeat of our meetings and presentations, equipped with modern technology to facilitate seamless communication and engagement.
- Our conference hall hosts a variety of events, from team meetings and client presentations to workshops and training sessions. It plays a vital role in driving collaboration and decision-making within our organization.
- The conference hall plays a crucial role in our daily operations, hosting a range of activities that drive our business forward. It's not just a room; it's a space where ideas are shared, decisions are made, and collaborations thrive.





# INSIDE OUR OPERATIONS

## Process In Pictures





# INSIDE OUR OPERATIONS

## Process In Pictures





# BEHIND THE SCENE

## Our Products In Process





# MANUFACTURING FUSION

## A Mosaic of Processes



# VMC Machine

## Introduction to VMC Machines

VMC machines are vertically oriented milling machines equipped with a spindle that operates along the vertical axis. These CNC machines utilize cutting-edge technology to automate machining processes, enhancing productivity and machining accuracy.

VMC machines commonly feature tool changers, high spindle speeds, and worktables for holding work pieces securely in place.

## The Basics of VMC Machines

One of the primary advantages of VMC machines is their ability to perform a wide range of machining operations with high precision. These machines are capable of producing complex parts and components by leveraging multi-axis machining capabilities. The vertical orientation of the spindle allows for efficient chip removal and coolant application, ensuring optimal machining conditions.





# Packing

## Purpose

The purpose of this specification is to describe minimum packing requirements for the different items/equipment for all export Project and also to define marking and shipping requirements during transportation by ship, road and air for all export jobs.

## SCOPE

For export jobs, sea worthy packing capable of performing all necessary functions like prevention of damage to the contents, sufficient to support frequent handling and lengthy period of outdoor storage in adverse weather conditions are required. Workmanship and materials used shall be of high standard meeting the technical requirements and in accordance with best commercial export packing practices. Vendor shall be responsible for sea worthy export packing, however it shall meet the minimum requirements specified herein. Equivalent or better packing methods may be deployed subject to approval of the BHEL/Purchaser. Vendor shall submit the packing procedure for its equivalent for purchaser's approval during detailed engineering.

The scope this specification is to define VENDOR's responsibilities in terms of:

Preservation of the GOODS/items/equipments before packing.

Packing of the GOODS for road, rail, sea and/or air transportation to desired destination i.e. project site

Making cases/crates

Chemical Treatment/Fumigation before packing to prevent fungus, damage due to termite, borer, rats, etc.

Marking of cases/crates.

Other Services required.



# ENSURING PERFORMANCE

## Quality Inspection & Testing

1. Raw Material Inspection – Technical Certificates (TCs) are verified to check material composition analysis (chemical & Physical) using heat number as reference.
2. Visual Inspection – The fabricated tanks are inspected for any visible defects, such as dents, scratches, or weld imperfections.
3. Dimensional Measurements – Using precision measuring tools, the critical dimensions are checked to ensure they meet the specifications and tolerances.
4. Leak Testing – Pressure test is done for the tank to ensure it is leak-proof and can withstand the operating pressure without leakage.
5. Welding Inspections – The welds are inspected visibly and/or using NDT methods like DPT.
6. Paint Inspection – After painting the surface finish and coating on the transformer tank is checked for any defects, such as bubbles, cracks, uneven application and dry film thickness along with scratch test for checking proper adhesion.
7. Final Inspection – Comprehensive inspection of assembled transformer tank with cable boxes, conservator, pipe lines, cable structures is done along with other visual and dimensional tests.





# Thank you for your time and attention.



We appreciate the opportunity to share our passion and expertise with you. If you have any further questions or would like to explore potential collaborations, please don't hesitate to reach out to us.

We look forward to the possibility of working together



**AAURLO POWER**  
(AN ISO: 9001-2015 Certificate Company)



**+91 800-742-7607**



**aaurlpower@gmail.com**



**www.aaurlpower.in**



**Plot No. PAP S-16, Phase-2,  
Savardari Chakan MIDC,  
PUNE - 410501**

